

Simplify your PKI. Move it to the Cloud.

Keyfactor PKI as-a-Service combines expert-run PKI with powerful certificate lifecycle automation in a single cloud platform.

1 Billion+

Certificates issued globally

**10 of the
Fortune 100**

Run on Keyfactor PKIaaS

60%

Reduction in PKI Spend

The leader in PKI as-a-Service

PKI is critical to enterprise security, but setting up the infrastructure and hiring the skilled personnel needed to build, operate, and maintain it 24x7 is no easy task. With security teams under increasing pressure, they need a new cloud-first approach to simplify and scale PKI on demand.

Key benefits



Replace legacy hardware and maintenance

Eliminate the manual effort, expense, and risk of deploying and maintaining PKI infrastructure in house.



Maximize security and compliance

Meet security requirements with a dedicated, high-assurance PKI designed and built to the highest standards.



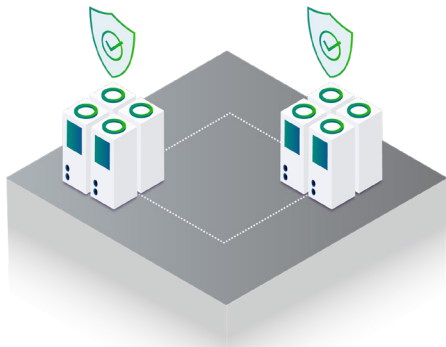
Automate and scale up on demand

No per-certificate fees, no hardware or software — scale to millions of certificates without any limitations.

Key features

Get a best practice PKI built from the ground up

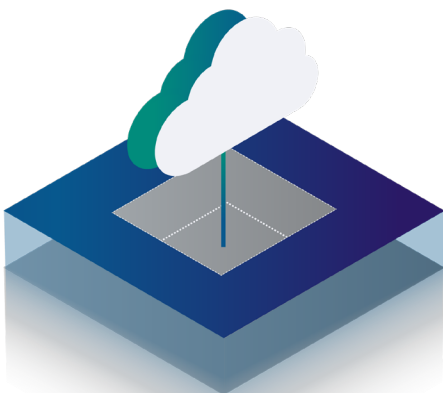
All our PKI deployments start with a robust CP/CPS and an always-offline, fully air-gapped root CA. Each root of trust is protected with a dedicated FIPS 140-2 Level 3 HSM and multi-layered security in state-of-the-art facilities.



- ✓ Hosted offline root CA w/ HSM
- ✓ Multi-layered access controls
- ✓ GSA level 5 security vault
- ✓ Key escrow and disaster recovery
- ✓ 24/7 on-site security guards

Scale up rapidly without the heavy lifting

No hardware necessary. We deploy your private PKI in a single-tenant cloud environment with highly available, HSM-backed Issuing CAs, fully-redundant CRL infrastructure, and robust data backup and recovery services.



- ✓ Highly available issuing CAs
- ✓ Built-in FIPS 140-2 Level 3 HSMs
- ✓ Real-time revocation infrastructure
- ✓ AD and auto-enrollment integration

How it works



We build it

It's your PKI — we set up a dedicated offline root in a maximum-security facility.



We deploy it

Highly available and HSM-backed Issuing CAs run in a single-tenant cloud instance.



We maintain it

Our experts handle everything from CA and CRL maintenance to firewalls and patching.

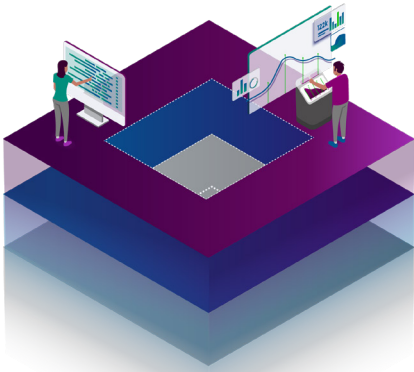


You run it

Your teams issue, deploy, and manage all certificates from a single easy-to-use UI.

Offload 24/7 PKI maintenance to our experts

Once your PKI is deployed, our skilled operations team provides 24x7x365 service monitoring and support, freeing up your team to drive more value for the business.



- ✔ Continuous monitoring and support
- ✔ Offline root and issuing CA maintenance
- ✔ Firewall, patch management, logging, etc.
- ✔ SLA-driven rapid incident response

“ The PKI SaaS solution delivered with agility. Easy to integrate and customize.”

Cybersecurity Architect,
Healthcare



Orchestrate any key, any certificate from one console

Issue, manage, and automate the lifecycle of keys and certificates from a single web-based interface – whether issued from your hosted PKI, existing on-premise CAs, or your third-party CA vendors.

“ The support staff that helped implement the managed PKI is very knowledgeable and responsive.”

IT Architect,
Digital Banking Disruptor



Certificate Search

CA contains

Include Revoked Include Expired

Dashboard

- 76,081 Active Certificates
- 1,219 Expire in 14 Days
- 587 Expire in 7 days
- 972 Expired
- 214 Revoked
- 72 Weak Keys

By Signing Algorithm

- SHA 256 w/RSA
- SHA 256 w/ECDSA
- SHA 512 w/RSA
- SHA 1

CA Status: ICA-1

Last Sync: 2/04/2021 9:08:02 AM
Certificates Requested: Last 24 Weeks

Active Certificates by Template

- PKI
- WebServer1
- PKI
- OCSP
- WebServer2
- IP
- IP

Revocation Monitoring

SSL Orchestrator Job Status

SSL/TLS Discovery and Monitoring

Networks		Orchestrator Pools	Results			
New Network	Edit	Delete	View Scan Details	Scan Now	View Network Endpoints	Refresh
Name	Orchestrator Pool	Discovery Status	Monitoring Status	Description		
Network 1	Default Pool	● Last Scanned: 1/20/21	● Last Scanned: 1/20/21	N/A		
Network 2	Default Pool	● Last scanned: 1/11/21	● Last scanned: 1/11/21	N/A		
Network 3	Default Pool	● Disabled	● Disabled	EMEA		

Expiration Alerts

Display Name	Certificate Collection	Timeframe	Handler
Expiring in 30 Days	My Certificates	30 days before	ExpirationRenewal
Expiring in 60 Days	F5 Certificates	60 days before	ExpirationPowershell

Integrate with your enterprise apps and workloads

Built-in Active Directory (AD) auto-enrollment via cloud gateway makes it fast and simple to issue certificates as if it were an on-premise PKI. Easy-to-use APIs and pre-built integrations allow you to plug your PKI into existing tools and applications.

IAM Microsoft Okta OneLogin PingIdentity	Certificate Authorities (CAs) Microsoft, DigiCert, HID, PrimeKey, WIS@key, ENTRUST, GlobalSign, SPECTIGO, GoDaddy, openPKI	PAM thycotic CYBERARK	HSM THALES CIPHER			
Cloud & DevOps Azure, Docker, Kubernetes, AWS	Incident & Workflow now, bmc, cherwell, splunk	Servers, Load Balancers & ADCs Microsoft, FS, AVI Networks, Citrix, Java, APACHE, NGINX, A10				
Extensibility >	CA Gateways	Orchestrators	Agents	REST API	SCEP	ACME

Key benefits

All-in-one solution

One vendor – combines fully-managed PKI and certificate lifecycle automation.

Tested and proven

We're the most reliable and widely adopted PKI as-a-Service platform – since 2011.

No lock-in

You retain full control over root keys and recovery materials in escrow to avoid any lock-in.

Tenured PKI experts

Our roots started in PKI consulting – no one knows how to build and run PKI like we do.

Unmatched services

Fast SLA-driven response, SOC 2 Type II audited annually, and 99% support satisfaction.

Limitless scalability

Scale up easily with high-availability and geo-redundant options.

[Request a demo ↗](#)

KEYFACTOR

Contact us at sales@keyfactor.com or via phone at +1 (216)-785-2946.