

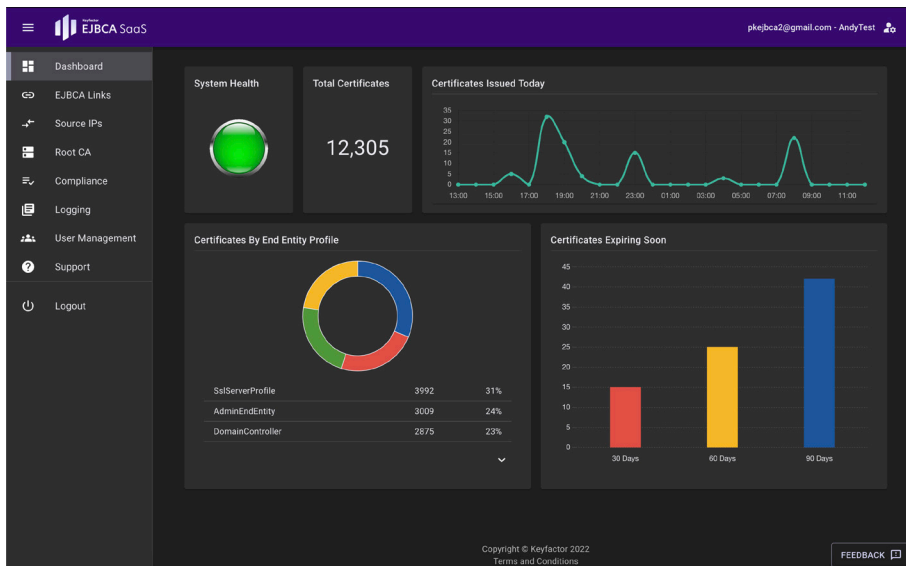
SaaS-delivered PKI, managed by experts.

Get all the advantages of enterprise-grade PKI, without the headache of managing the underlying infrastructure. We'll handle everything from HSMs to databases to Kubernetes clusters, while you run your enterprise.

Setting up and maintaining a proper PKI deployment requires specialized expertise, ongoing administration, and complex infrastructure, including HSMs, databases, and certificate authorities (CAs), for starters. Any CA, including EJBCA Enterprise, relies on a robust technology stack, and as always where security is a focus, there is a constant need for maintenance and updates.

With EJBCA SaaS, setting up a secure, scalable, and post-quantum ready PKI has never been easier. You get all the advantages of EJBCA Enterprise, without the effort and expense of deploying and maintaining industry-compliant infrastructure.

We deliver a full-blown PKI as a service, reducing the burden on your internal teams, and allowing you to focus on your core business, while ensuring that you're compliant with the highest levels of security. It's your PKI, we ensure that it is always secure, available, and ready to scale with your needs.



EJBCA SaaS self-service portal makes it easy for PKI administrators to monitor, manage, and maintain control over their CA infrastructure, without support involvement.

It's PKI, Simplified

- You get full access to EJBCA Enterprise PKI software with flexible protocols, interfaces, and configurations
- Choose your preferred subscription and deploy your PKI right from the AWS or Azure marketplace
- Eliminate the need to manage yet another critical in-house infrastructure component

Key Benefits:

- Protect critical systems and data across hybrid and cloud environments with PKI-based machine identities
- Achieve faster time to value (TTV) with an instant subscription and on-demand provisioning
- Meet stringent security and compliance requirements while preparing for post-quantum cryptography with a trusted PKI
- Reduce total cost of ownership (TCO) by offloading backend infrastructure to trusted experts
- Scale on-demand and issue hundreds of millions of certificates including hybrid and post-quantum under high-transaction loads

Deploy fast, scale on-demand

Simply choose your deployment size and region from the Azure or AWS marketplace, and we'll make sure your PKI is deployed and managed according to best practices and with the highest levels of assurance. Upgrade your deployment size at any time with the click of a button and EJBCA SaaS will scale on-demand.

Simplify PKI and stay in control

With EJBCA SaaS, users manage and control their PKI without the need for support involvement. You have full self-service access to features, including dashboards, security access configurations, logging configurations, root activation and deactivation, and even direct access to the backend EJBCA Enterprise.

Maintain high assurance and flexibility

Get a dedicated root CA, backed by your choice of HSM, including AWS Key Management Service (KMS), AWS CloudHSM, Azure Key Vault, and Azure Managed HSM. Or you can leverage your existing root CA in your datacenter or in the cloud to sign CAs within EJBCA SaaS.

Choose your subscription

EJBCA SaaS is available in ten different sizes, ranging from A, designed for non-production environments, to I and J for hyper-scale deployments.

EJBCA	Starter (A and B)	Professional (C–E)	Scale (F–H)	Enterprise (I and J)
Best For:	Non-production and low volume use cases	Small to medium enterprise IT needs	Medium to large enterprise IT or manufacturing needs	Large enterprise IT and manufacturing needs
Guaranteed SLA	99.9%	99.9%	99.9%	99.9%
Active certificate capacity	2,500–10,000	25k–100k	150k–500k	1M–2.5M+
OCSP performance	~25 response/second	~50 responses/second	~100 responses/second	Inquire
Geographic Availability	Region - US or EU or AP and 1 Availability zone	1 Region - US or EU or AP and 2 Availability zones	1 Region - US or EU or AP and 2 Availability zones	Inquire

About Keyfactor

Keyfactor brings digital trust to the hyper-connected world with identity-first security for every machine and human. By simplifying PKI, automating certificate lifecycle management, and securing every device, workload, and thing, Keyfactor helps organizations move fast to establish digital trust at scale — and then maintain it. In a zero-trust world, every machine needs an identity and every identity must be managed.

For more information, visit www.keyfactor.com

Key Features:

Dedicated offline root with full activation and deactivation control. Azure or AWS accounts holding the keys can be given back to the customer at any time.

Self-service SaaS portal to manage and control your PKI, or directly access EJBCA Enterprise for advanced configuration.

Intuitive dashboard to view PKI health status, certificate issuance trends, certificates expiring in the next 30/60/90 days, and more.

Flexibility and reliability, including geographic availability in US, EU and AP, full redundancy including database replication, and high availability support.

Up to 24/7 expert support available, with continuous monitoring, security and updates backed by guaranteed SLAs.

Certificate lifecycle automation, via native integration with Keyfactor Command or Keyfactor Command for IoT platforms.

Trusted and compliant, based on a Common-Criteria certified and NSA CSfC-approved PKI platform.

Get Started

Ready to modernize your PKI?

[Get started in AWS →](#)

[Get started in Microsoft Azure →](#)